



Florida Bearings. Inc.
3164 N. Miami Avenue
Miami, FL 33127

EXAMPLE REPORT – Customer Name

29-October-2008



SKF Certified
Maintenance Partner



Result Summary for Sample Customer Site

SKF Priority Codes	
1	Imminent Failure; Shut Down as Necessary
2	Immediate Attention; Repair within 30 Days
3	Repair within 90 Days
4	Non-urgent Recommendation
6	Baseline Analysis - Work was Performed
6	Equipment Operating at Satisfactory Levels

For results reported prior to 09-01-08	
R	Machinery Assets Requiring Immediate Corrective Action for Reliable Operation
Y	Machinery Assets Requiring Scheduled Corrective Action for Reliable Operation
G	Machinery Assets Observed to be Running Normally without Problem Issues
x	Machinery Assets Not Running or Operable while Inspector On Site

Reasons for Uncollected Data	
A	Unsafe to collect data
B	Not Running
C	Out of Service
D	No Manpower(No one to start eqp.)
E	Unloaded (Produces unreliable data)
F	Standby (Spare/Cannot be started)
	Not up for inspection

#	Asset Name	Machinery Asset ID	09/27/07	10/25/07	11/29/07	12/20/07	01/31/08	02/28/08	03/27/08	05/01/08	05/29/08	06/26/08	08/07/08	10/29/08	Notes
1	Diesel Additive Pump AP1A-Motor	AP1A-Motor	G	G	G	x	G	G	G	x	x	G	x		
2	Diesel Additive Pump AP1A - Pump	AP1A-Pump	Y	G	Y	x	Y	G	Y	x	x	x	x		
3	Diesel Additive Pump AP1B - Motor	AP1B-Motor	G	G	G	G	x	G	G	G	G	G	G	F	
4	Diesel Additive Pump AP1B - Pump	AP1B-Pump	Y	G	G	G	x	G	Y	G	G	G	G	F	
5	Jet A Additive Pump AP7 - Motor	AP7-Motor	G	x	x	x	x	G	x	x	x	x	G		
6	Jet A Additive Pump AP7 - Pump	AP7-Pump	Y	x	x	x	x	R	x	x	x	x	G		
7	Int Additive Pump AP3A - Motor	AP3A-Motor	G	G	G	G	G	G	G	G	x	x	G		
8	Int Additive Pump AP3A - Pump	AP3A-Pump	G	G	G	G	G	G	G	G	x	x	G		
9	Int Additive Pump AP3B - Motor	AP3B-Motor	G	G	G	x	x	G	G	G	x	x	G	2	
10	Int Additive Pump AP3B - Pump	AP3B-Pump	G	G	G	x	x	G	G	G	x	x	G		
11	Red Dye Pump AP4A - Motor	AP4A-Motor	G	G	G	G	G	G	G	G	G	G	G		
12	Red Dye Pump AP4A - Pump	AP4A-Pump	G	G	G	G	G	G	G	G	G	G	G		
13	Red Dye Pump AP4B - Motor	AP4B-Motor	x	x	G	Y	x	x	x	Y	R	R	R	6	
14	Red Dye Pump AP4B - Pump	AP4B-Pump	x	x	G	G	x	G	G	G	G	G	G		
15	Lane 14 Red Dye Additive Pump - Motor		G	G	G	G	x	G	G	x	x	x	x		
16	Lane 14 Red Dye Additive Pump - Pump		G	G	G	G	x	G	G	x	x	x	x		
17	Anti Static Additive Pump Ap7 - Motor	AP7-Motor	x	G	x	x	G	x	x	G	x	x	G		
18	Anti Static Additive Pump Ap7 - Pump	AP7-Pump	x	G	x	x	G	x	x	G	x	x	G		
19	Ethanol Offload Pump - Motor		x	x	x	G	G	x	G	G	x	G	x		
20	Ethanol Offload Pump - Gearbox		x	x	x	G	G	x	G	G	x	G	x		
21	Ethanol Offload Pump - Pump		x	x	x	G	G	x	G	G	x	G	x	3	
22	Vapor Recovery Combustion Blower 1		G	G	G	G	G	G	G	G	Y	Y	G		
23	Vapor Recovery Combustion Blower 2		G	G	G	G	G	G	G	G	G	G	G		
24	Vapor Main Blower - Motor		x	x	x	x	x	x	x	x	x	x	x		
25	Vapor Main Blower - Blower		x	x	x	x	x	x	x	x	x	x	x		
26	Lubricity Pump 14-1 - Motor		G	G	G	G	x	G	G	G	G	G	G	C	
27	Lubricity Pump 14-1 - Pump		G	G	G	G	x	G	G	G	G	G	G	C	
28	Lubricity Pump 14-2 - Motor		x	x	G	x	G	G	G	G	G	G	G		
29	Lubricity Pump 14-2 - Pump		x	x	G	x	G	G	G	G	G	G	G		

The data presented in this SAMPLE REPORT is for example purposes only and does not reflect the actual condition of any machine.





PREDICTIVE DETAILED REPORT

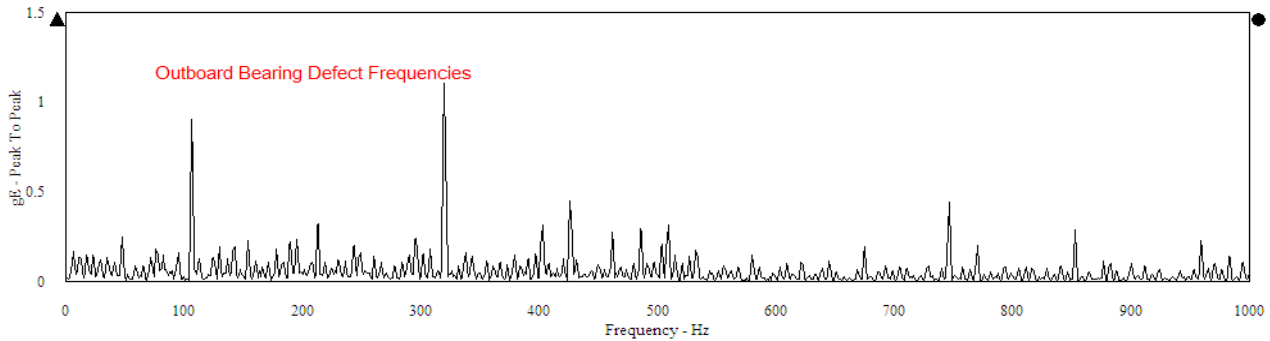
Machinery Asset ID: AP3B - Motor
Asset Name: Int Additive Pump
Priority Code: **2 (Immediate Attention; Repair within 30 days)**
Recommendations:

1) Replace outboard (non-drive end) bearing.

Observations:

1) Bearing defect frequencies are present in the spectrum.

Spectrum
INT_ADD_PMP_3B - MTR \ 1HG3, 10/30/2008 1:44:07 PM, Channel X, Trend Overall: 4.782 gE





PREDICTIVE DETAILED REPORT

Machinery Asset ID:

Asset Name: Ethanol Offload Pump - Pump

Priority Code: 3 (Repair within 90 days)

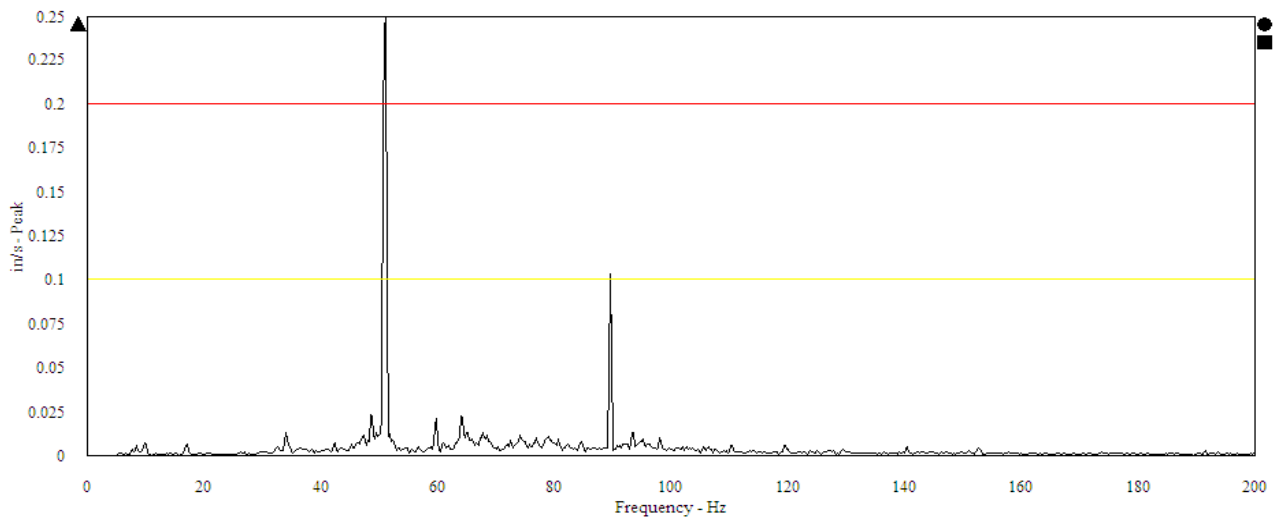
Recommendations:

- 1) Inspect pump for loose bolts, and repair or replace as necessary.

Observations:

- 1) Structural looseness is present on the pump.

Spectrum
ETHANOL OFFLD - PMP \ 3VVEL, 10/29/2008 9:44:24 AM, Channel X, Trend Overall: 0.3129 in/s





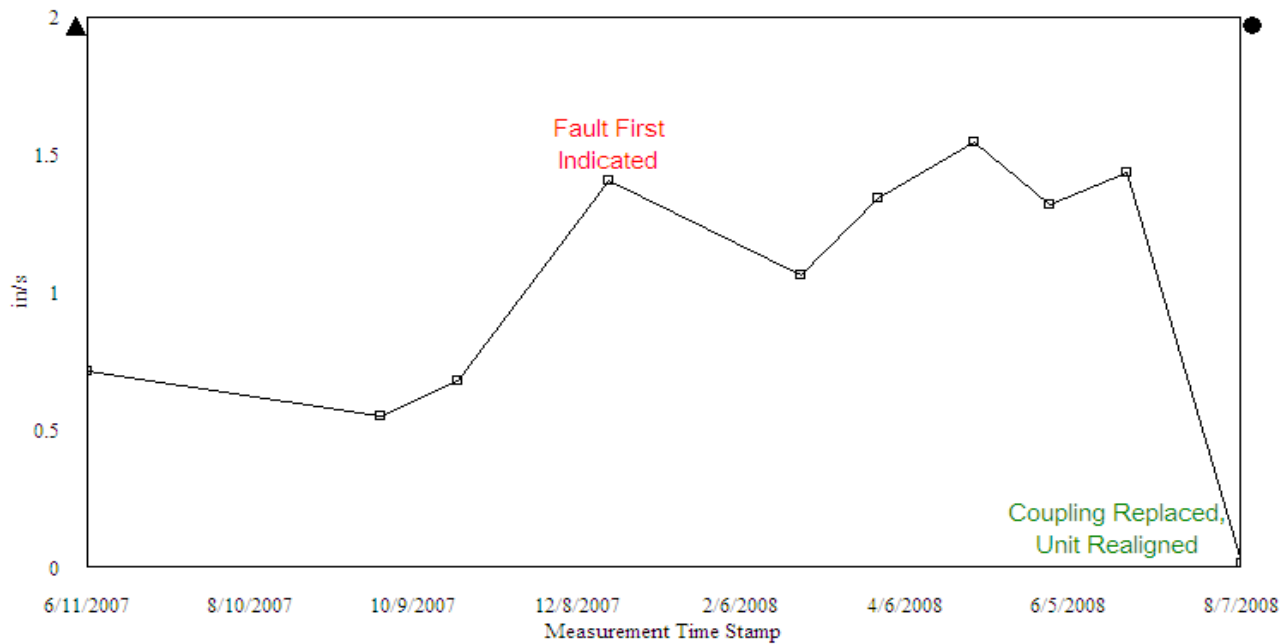
PREDICTIVE DETAILED REPORT

Machinery Asset ID: AP4B - Motor
Asset Name: Red Dye Pump AP4B - Motor
Priority Code: 6 (Baseline analysis-work was performed)
Recommendations:
1) None at this time.

Observations:

1) A baseline analysis was performed and the unit was found to be operating at normal levels.

Trend
RED DYE PMP 4B - MTR \ 1HVEL, Channel X



Sample Last Measurement Report

Source: SAMPLE DATA

10/31/2008 10:55:41 AM

Last Measurement

<u>Machine name</u>	<u>Machine description</u>	<u>POINT name</u>	<u>Date/Time</u>	<u>Last value</u>	<u>Units</u>
DSL ADD P AP1A-MTR	DIESEL ADDITIVE PUMP AP1-MOTOR	MTR OB H VEL	10/29/2008 8:37:50 AM	0.220	in/s
DSL ADD P AP1A-MTR	DIESEL ADDITIVE PUMP AP1-MOTOR	MTR OB V VEL	10/29/2008 8:38:43 AM	0.210	in/s
DSL ADD P AP1A-MTR	DIESEL ADDITIVE PUMP AP1-MOTOR	MTR OB A VEL	10/29/2008 8:38:12 AM	0.150	in/s
DSL ADD P AP1A-MTR	DIESEL ADDITIVE PUMP AP1-MOTOR	MTR IB H VEL	10/29/2008 8:39:37 AM	0.175	in/s
DSL ADD P AP1A-MTR	DIESEL ADDITIVE PUMP AP1-MOTOR	MTR IB V VEL	10/29/2008 8:40:06 AM	0.186	in/s
DSL ADD P AP1A-PMP	DIESEL ADDITIVE PUMP AP1-PUMP	PMP IB H VEL	10/29/2008 8:41:33 AM	0.132	in/s
DSL ADD P AP1A-PMP	DIESEL ADDITIVE PUMP AP1-PUMP	PMP IB V VEL	10/29/2008 8:42:54 AM	0.075	in/s
DSL ADD P AP1A-PMP	DIESEL ADDITIVE PUMP AP1-PUMP	PMP OB H VEL	10/29/2008 8:44:18 AM	0.223	in/s
DSL ADD P AP1A-PMP	DIESEL ADDITIVE PUMP AP1-PUMP	PMP OB V VEL	10/29/2008 8:43:42 AM	0.198	in/s
JET A ADD P AP7 MTR	JET A ADDITIVE PUMP AP7-MOTOR	MTR OB H VEL	10/29/2008 10:49:10 AM	0.051	in/s
JET A ADD P AP7 MTR	JET A ADDITIVE PUMP AP7-MOTOR	MTR OB V VEL	10/29/2008 10:49:43 AM	0.076	in/s
JET A ADD P AP7 MTR	JET A ADDITIVE PUMP AP7-MOTOR	MTR OB A VEL	10/29/2008 10:50:00 AM	0.062	in/s
JET A ADD P AP7 MTR	JET A ADDITIVE PUMP AP7-MOTOR	MTR IB H VEL	10/29/2008 10:50:35 AM	0.072	in/s
JET A ADD P AP7 MTR	JET A ADDITIVE PUMP AP7-MOTOR	MTR IB V VEL	10/29/2008 10:50:55 AM	0.088	in/s
JET A ADD P AP7 PMP	JET A ADDITIVE PUMP AP7 PUMP	PMP IB H VEL	10/29/2008 10:51:13 AM	0.144	in/s
JET A ADD P AP7 PMP	JET A ADDITIVE PUMP AP7 PUMP	PMP IB V VEL	10/29/2008 10:51:40 AM	0.168	in/s
JET A ADD P AP7 PMP	JET A ADDITIVE PUMP AP7 PUMP	PMP OB H VEL	10/29/2008 10:51:59 AM	0.112	in/s
JET A ADD P AP7 PMP	JET A ADDITIVE PUMP AP7 PUMP	PMP OB V VEL	10/29/2008 10:52:17 AM	0.157	in/s